



BY APPOINTMENT TO
HER MAJESTY QUEEN ELIZABETH II
JAMES PURDEY & SONS LTD



BY APPOINTMENT TO
H. R. H. THE DUKE OF EDINBURGH
JAMES PURDEY & SONS LTD

1969

GUNS AND RIFLES
BY JAMES PURDEY & SONS LTD



JAMES PURDEY & SONS LTD
GUN AND RIFLE MAKERS



AUDLEY HOUSE · 57 & 58 SOUTH AUDLEY STREET · LONDON, W1Y 6ED · ENGLAND

TELEPHONE: 01-499 1801/2 CABLES: PURDEY, LONDON, W.1

CONTENTS OF CATALOGUE

History of the firm	<i>Pages 3-5</i>
When ordering a Purdey gun	6
The Building of a Purdey gun	7-16
The Purdey factory	17
Suggested specifications for the Purdey side-by-side game gun	18-19
Suggested specifications for the Purdey over-and-under gun	20-21
The Purdey single barrel trap gun	22
Purdey rifles	23-25
Cartridges and gun cases	26-27
Maintenance of the Purdey gun	28
Notes on the proof of gun barrels	29
West London Shooting Grounds	30
Specification charts for ordering a Purdey gun	31-34
Chart of metric conversions	35



GEORGE III TO ELIZABETH II

The Firm was founded in London by James Purdey when George III was King.

The Royal Family of England is one of the many families who for five generations have been users of Purdey guns and rifles.

Warrants of Appointment were granted by H.M. the late Queen Victoria, H.M. the late King Edward VII, H.M. the late King George V, and his late Majesty King George VI.

The Guns and Rifles that Messrs. Purdeys are able to offer to their customers are built in their own factory and they are built with that skill and individual attention that has made the Firm's products world famous for over 150 years.

It is with great pleasure and pride that Messrs. Purdey can announce that they have a new entry of young Gunmakers, who have selected this old and honourable trade as a profession, and who under the guidance and instruction of their "Masters" are becoming worthy to carry on the skilful work of the elder Craftsmen, and jealously guard the high reputation that is handed down to them.



THE "LONG ROOM"



The Long Room is the Board Room and Show Room of Purdey's. It houses portraits of members of the Purdey family and also contains an interesting collection of photographs and shooting records. The shields in this photograph are the shields of members of the Purdeys and Board of Directors, who have held the position of Master of the Worshipful Company of Gunmakers.

WHEN ORDERING A PURDEY GUN

A Purdey Gun is built to the personal requirements of each individual. The most important point in the ordering of a Purdey Gun is for the Customer to have the gun built exactly to his own requirements, taking into account the type of shooting he intends to do. A gun should be the extension of a shooter's arm and our guns are built so that, when used, they become part of each individual.

We are here to build this gun and to give you the benefit of our personal experience and the knowledge derived from years devoted to the building of the Purdey Gun.

The Bore of the Gun, the Boring of the Barrels, the length of the Cartridge, Weight, the Rib, whether Single or Double Trigger mechanism; all the details should be carefully thought out, and then let us advise you on these points.

You will find in this catalogue the details of the Guns we build, and this information should help you to send us your full requirements. We will then be able to give you all the information and advice you need. At the end of the catalogue we have included a Specification Chart and a Personal Dimensions Chart, in duplicate, which should be completed, and one copy returned to us with any order. We have also included a Chart of Metric Conversions to English Standards.

There is one point that we would like to make clear, and that is that every gun is built to each individual's personal specifications by our highly skilled Craftsmen and is, therefore, of the highest quality. Each order receives the personal care and attention of the Managing Director and his experience of building Purdey Guns.



THE BUILDING OF A PURDEY GUN

Barrels	<i>Pages 8-9</i>
Actions	10-11
Stocks	12-13
Engraving	14-15
Finishing	16

BARRELS

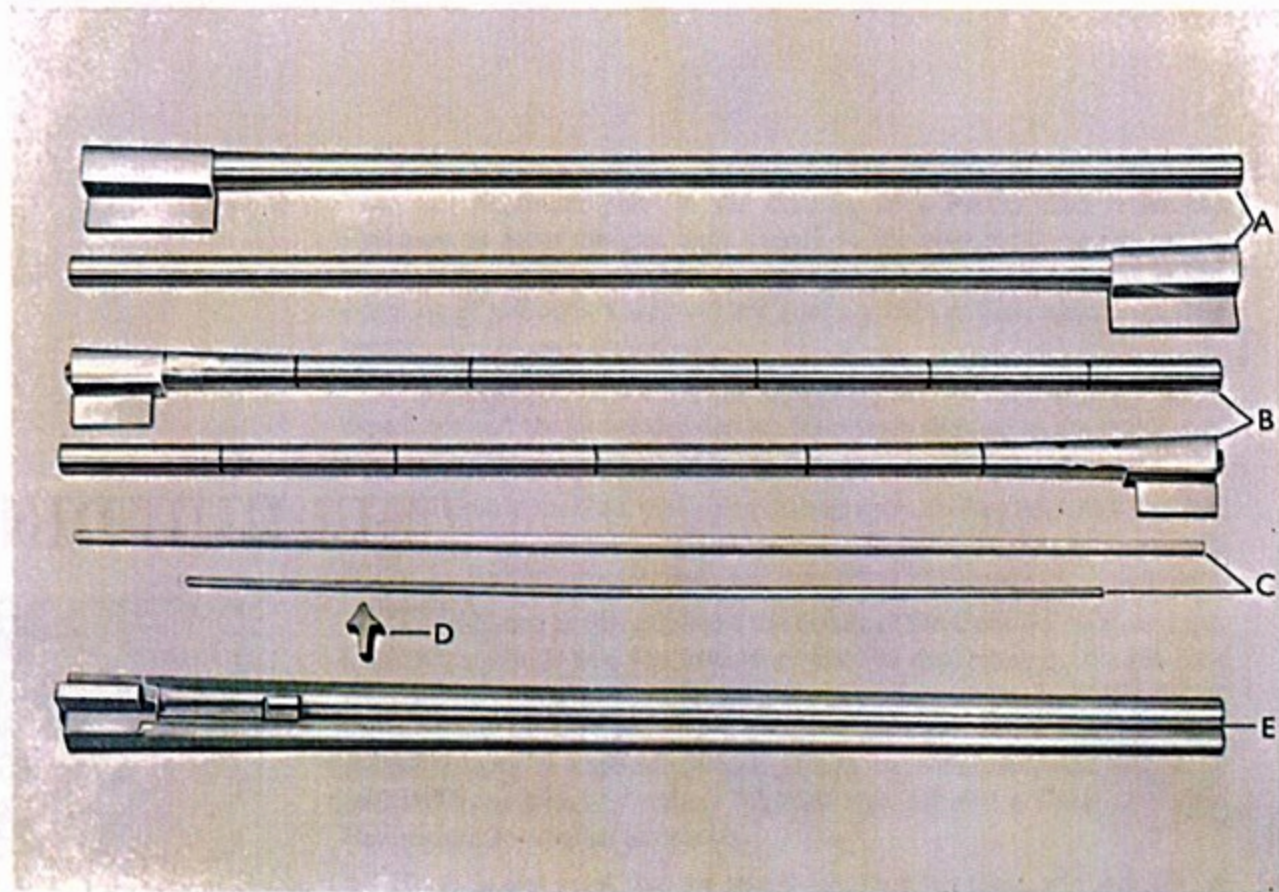
From the receipt of the rough tubes to the final finishing, the gun is built throughout by Purdey craftsmen in our London Factory.

First of all a calculation must be made of the weight of every part of the gun, so that the finished weapon will come up to the required weight, and have the perfect Purdey balance.

The Barrels come direct from the steel manufacturers as tubes in the rough state, as shown on the accompanying illustration. They are of the finest steel that can be obtained. They are next cut into the desired lengths, trued up to be alike, straightened and turned so that the outside wall is concentric with the bore. It will be seen from the accompanying illustration that in the truing operation, there are a number of Ring gauges, which have been cut in order to show how much the barrel is to be struck down to reach the weight required.

The third stage is the brazing together of the barrels, after which the ribs are fitted. The barrels are then sent to the London Proof House for the first or Provisional Proof.

Although the wall thickness is dependant on the weight and type of gun, the main consideration, must, of course, be the safety of the customer. The Purdey Factor of Safety is calculated to a higher level than the Standard demanded by the Gun Barrel Acts of 1868 and 1950.



A The rough tubes. These are machined from forgings of the very best steel obtainable.

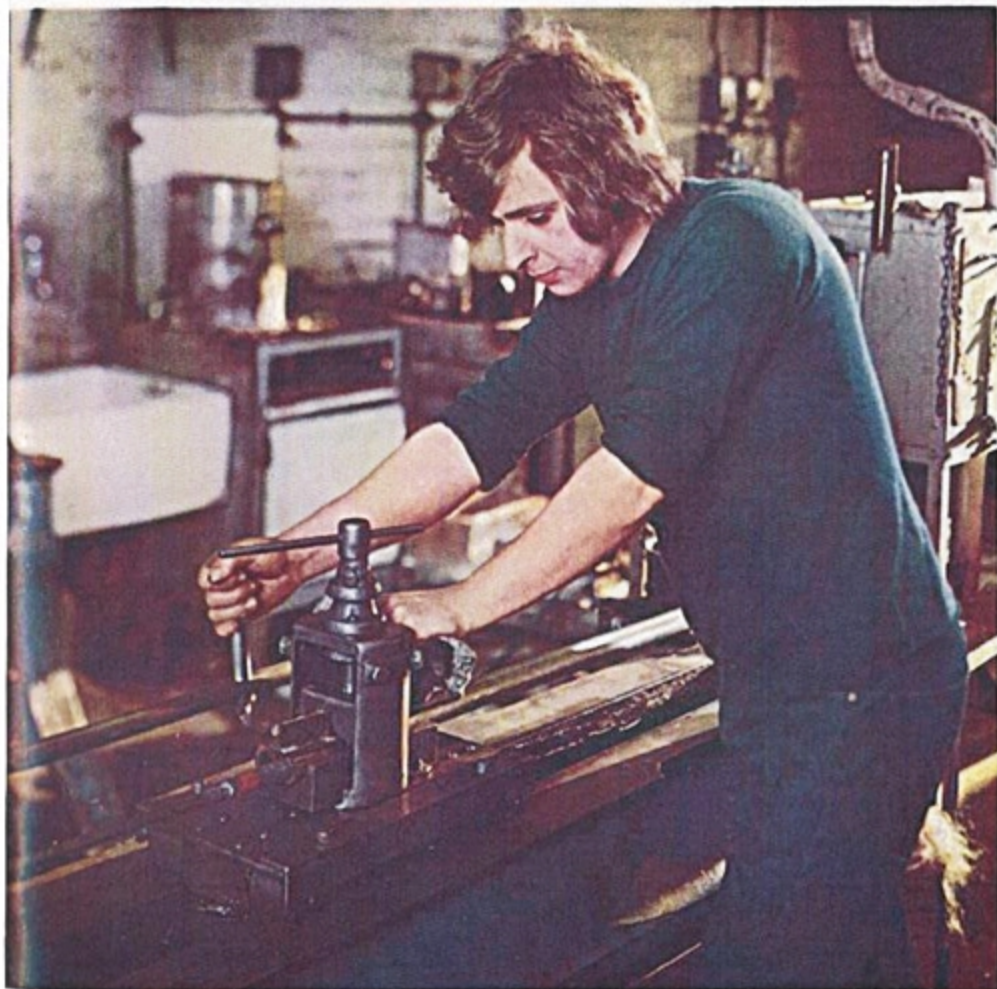
B The tubes machined for jointing and ringed at the gauge points for striking up.

C Top and bottom ribs machining.

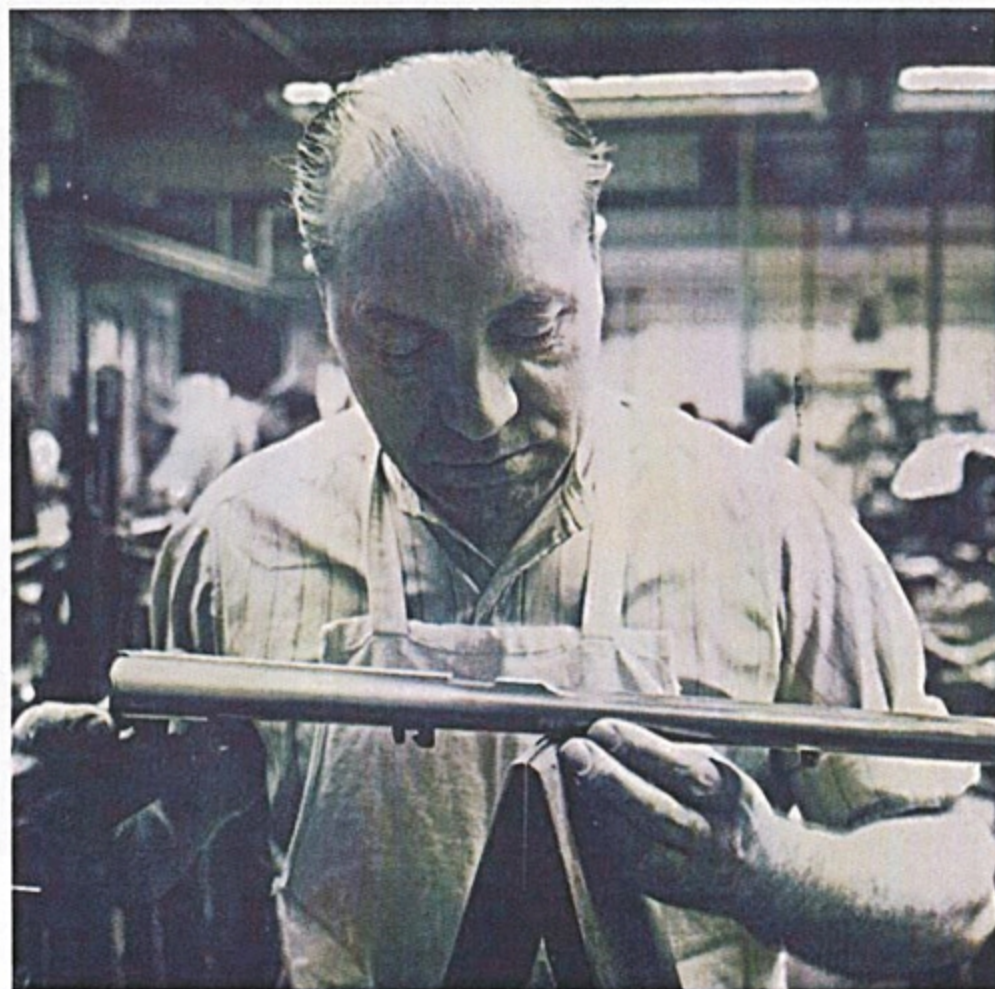
D The loop machining.

E Barrels jointed, ribbed and struck up ready for actioning. The barrels are Provisionally proved in this state and the Provisional Proof Mark can be seen on the flats.

Lapping the bore of a pair of shot gun barrels.

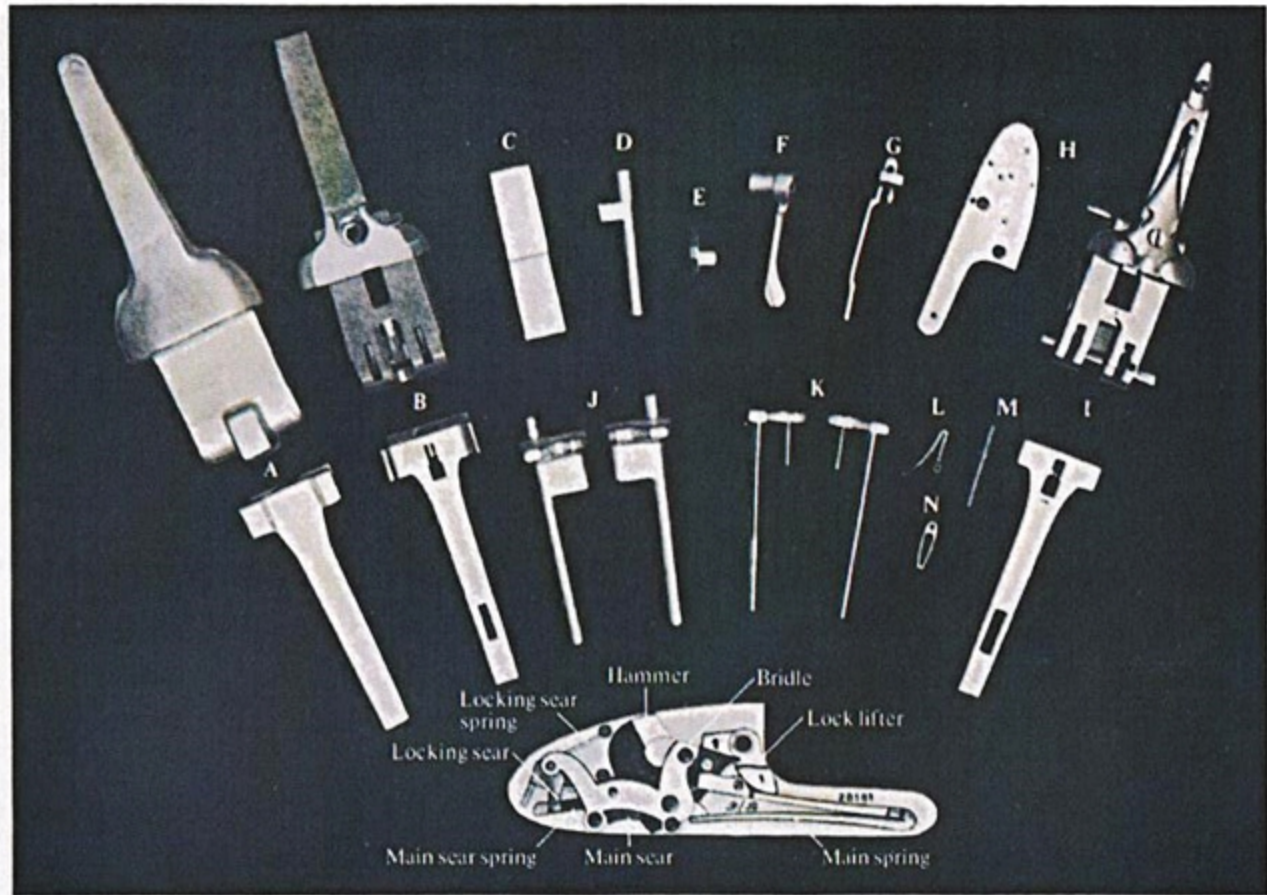


Checking a pair of rifle barrels for weight and balance.



ACTION AND FORE-PART

- A Action and forend forgings. All these forgings are forged to ensure a true grain flow throughout the length of the forging.
- B Action and forend forgings roughly machined for actioning. From this state it is all hand craftsmanship.
- C Bolt
- D Spindle.
- E Safety thumb piece.
- F Lever.
- G Safety slide.
- H Side lock.
- I Action and forend complete with one lock removed. In this state it is ready for stocking. It should be noted that the gun goes to Definitive Proof at this state. The View mark can be seen on the flats of the action. The other definitive marks are impressed on the flats of the barrels.
- J Extractor forgings.
- K Extractors machined ready for fitting.
- L Lever spring.
- M Striker blank ready for fitting.
- N Safety spring.



The Action and Forepart are illustrated in the accompanying photograph, which shows the rough forging, the machined action, and the finished action and forend.

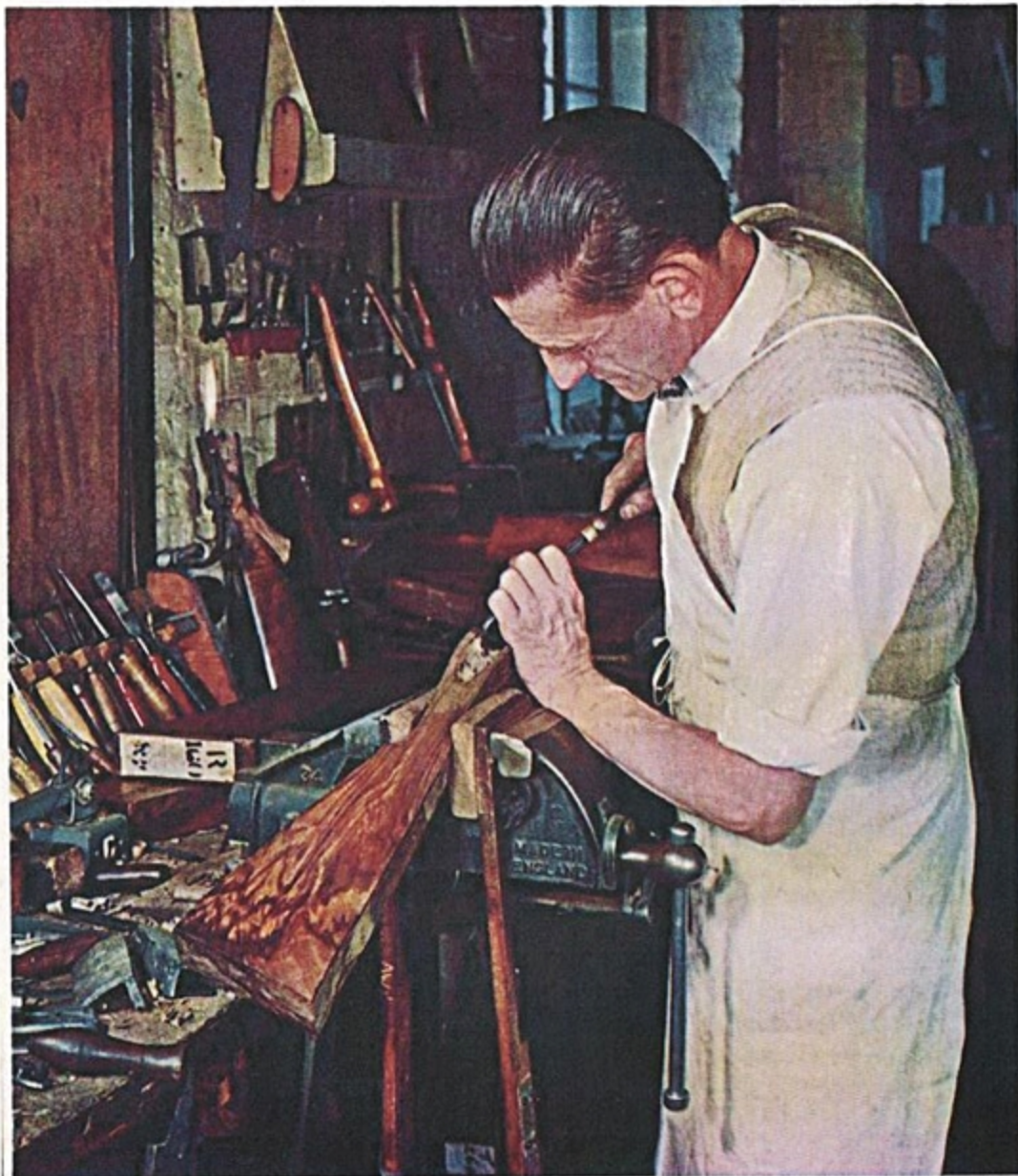
When the action and barrels are built, the gun is sent to the London Proof House in the Commercial Road, London, for the second or Definitive Proof, in accordance with the Proof Act 1950. There, it is stamped with the necessary Proof marks.



*Building an
Over and Under
action.*



*Chasing
the Fences on
a side-by-side gun.*



STOCKING

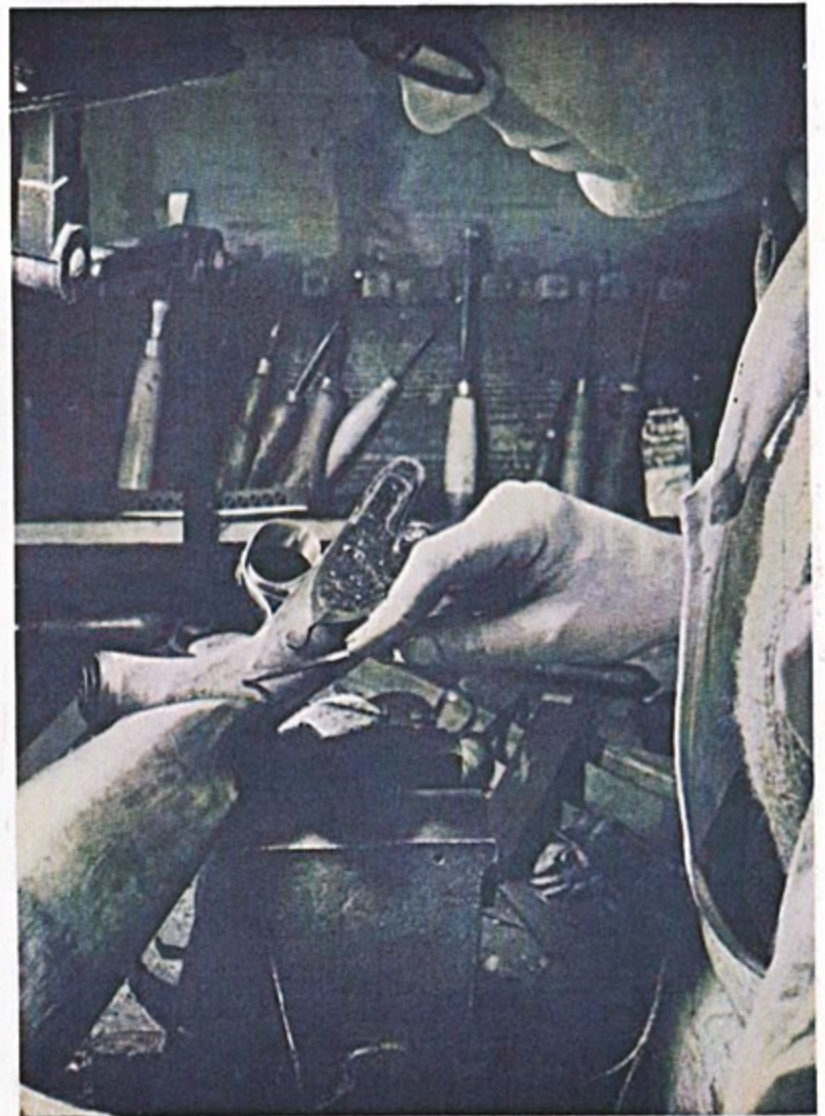
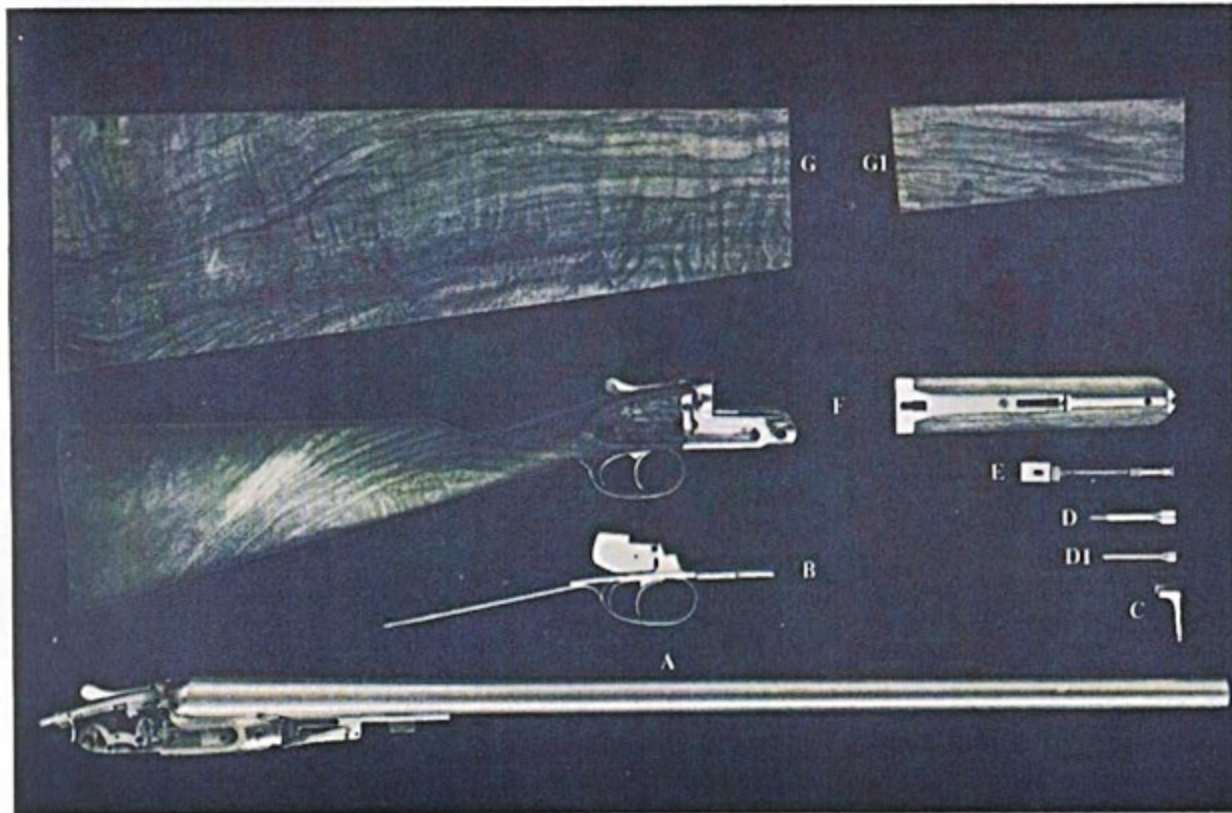
The next step in the building of a gun is that of Stocking. The gun stocks are cut from the very finest walnut, and come to us in rough unshaped blocks.

The stock has to be worked, hollowed and weighted according to the weight, and balance, to which the gun is to be made.

Stocking a Purdey Gun

Chequering

- A The barrels, action and forend, etc., in the finished filed condition ready for stocking.
- B The gun furniture, viz the triggerplate, triggers and guard.
- C The forend tip.
- D & D1 The breech-pin and hand-pin.
- E The forend snap.
- F The gun, rough stocked, ready for making off.
- G & G1 The rough stock and forend blanks.



ENGRAVING

As to the Engraving of the gun, this is a very specialised art, and the design is a matter of the individual choice of the customer. Examples of our standard form of engraving are shown on this page. We also undertake to engrave shooting and hunting scenes to suit individual customers wishes, examples of which are shown opposite. Our engravers do only the very finest work of their craft.



PURDEY EXTRA FINISHED GUN

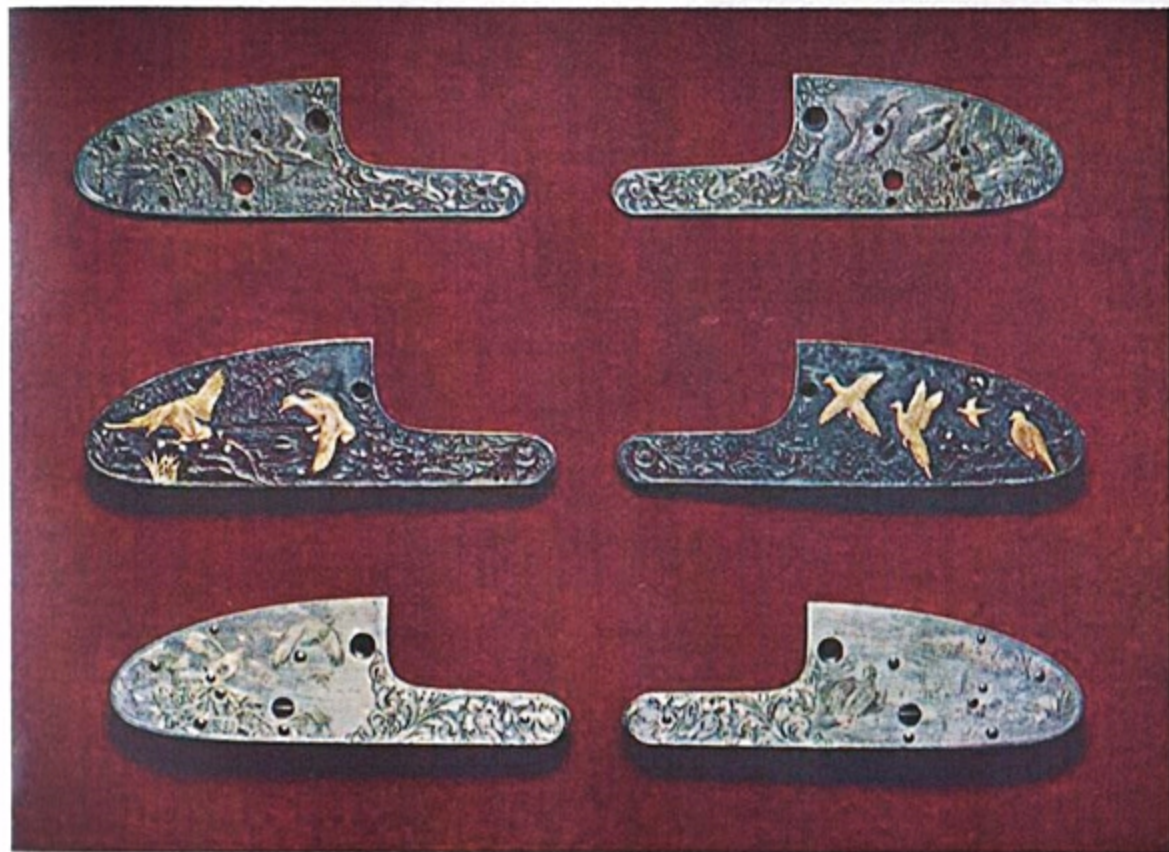
James Purdey & Sons have always made a speciality of extra finished guns, artistically decorated. This illustration represents a style much liked, the engraving being large scroll and the breech carved with oak leaves and acorns, but the breech carving may also be large scroll if preferred. This decoration is extra to the cost of a weapon. James Purdey & Sons also engrave weapons all over in relief. The cost of this is in accordance with the designs desired. (Prices on application.)



PURDEY STANDARD FINE ENGRAVING

All Purdey guns have the standard fine engraving as shown in the above illustration, unless otherwise ordered by the customer, who can if he wishes, have the lock plates specially engraved to his own design, for which a special quotation will be given. This standard engraving is included in the basic cost of the gun.

Bird and Animal Engraving



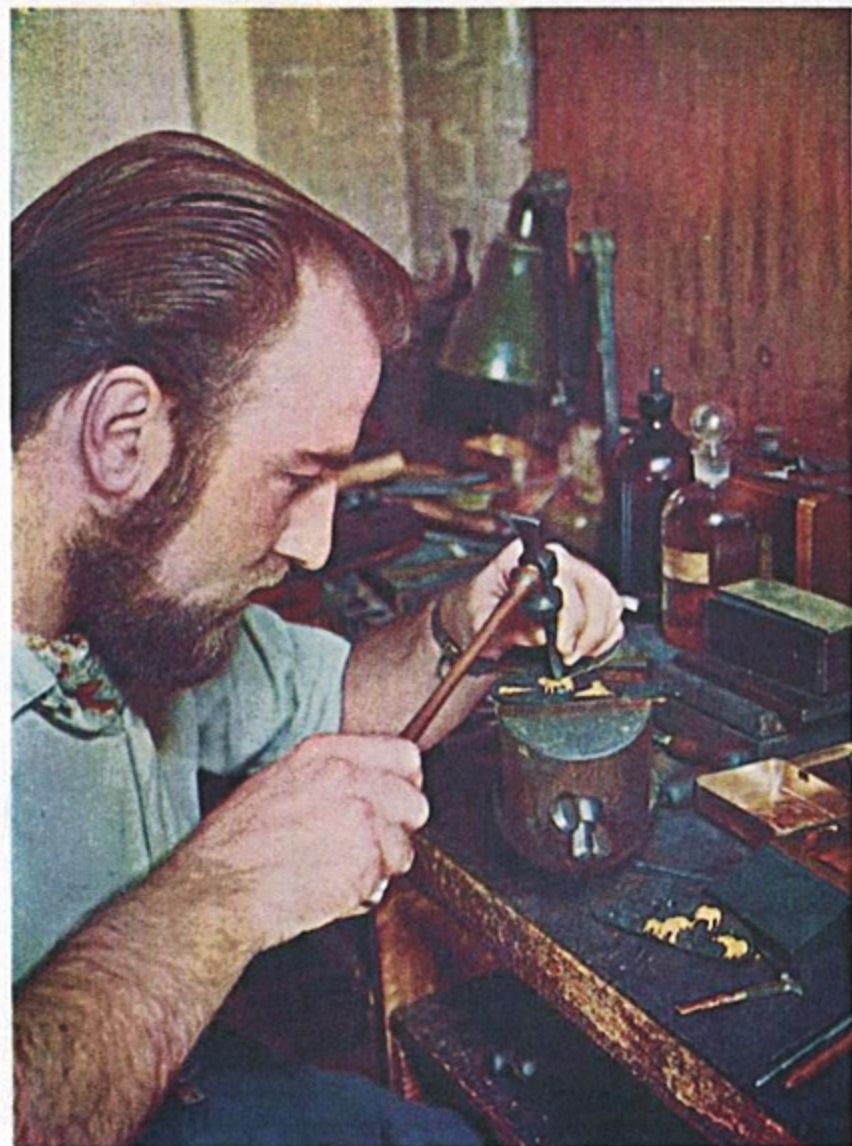
top: Deep carved all over with any type of Game scenes, Birds, Dogs, etc., or Classical style.

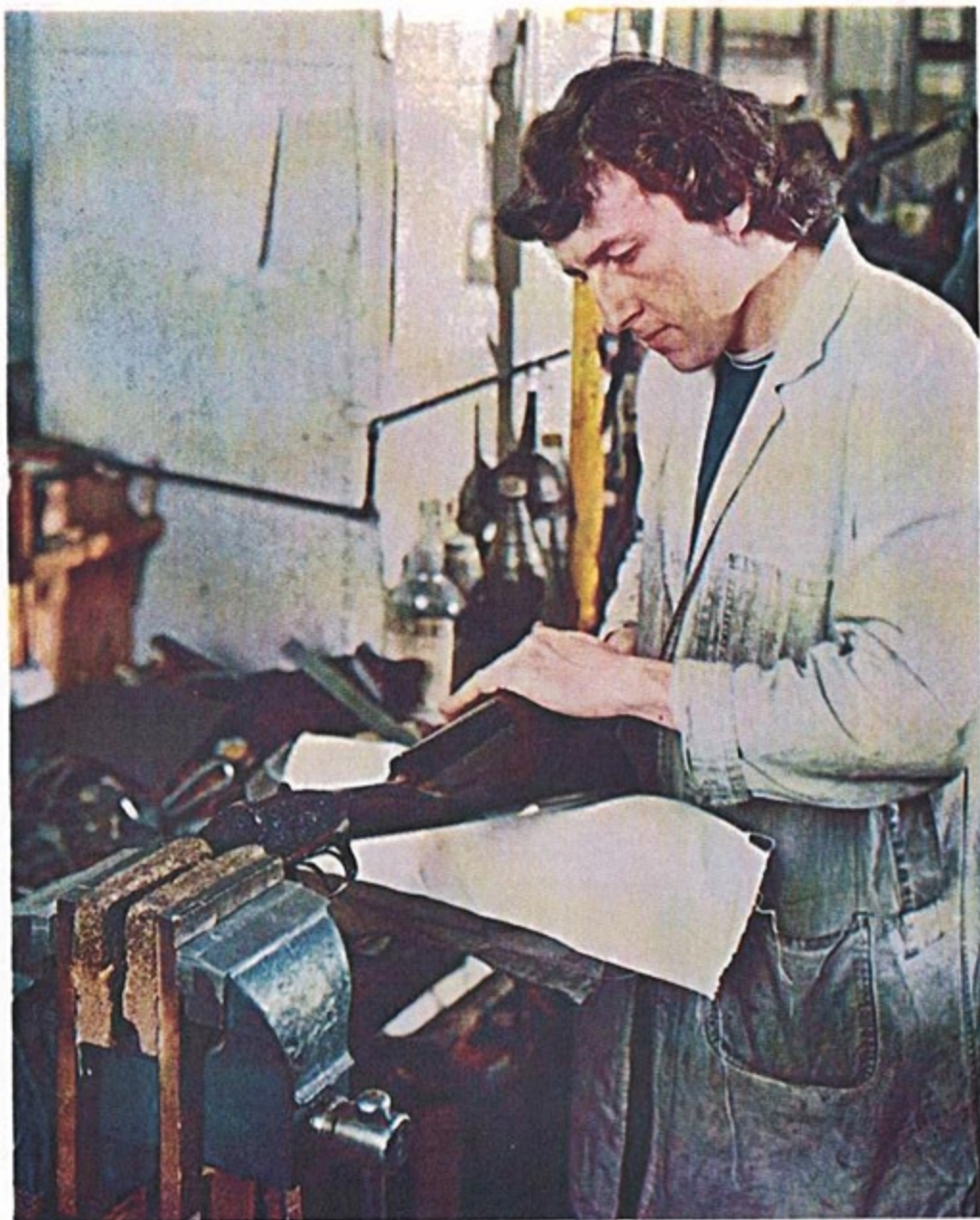
centre: Deeply carved all over with any type of Game scenes, Birds, Dogs, etc. and the Birds or Dogs modelled in gold.

bottom: Large Scroll engraving and carved leaf detonating with Game scenes, in line engraving on the lock-plates and bottom of the action.

PAGE FIFTEEN

Inlaying gold into a lockplate





FINISHING

When the engraving is completed, all the necessary metal parts are "hardened". The completed gun is then given to the Finisher, who removes the hardening stresses and strains from the metal components, and then assembles and regulates the mechanism. The gun is then taken to the Shooting Grounds, where each barrel is shot and regulated to the customer's requirements, and the mechanism is tested under Field conditions. The gun is then checked for weight and balance and finally finished.

At the completion of each stage in the building of a gun, the work is "viewed" or examined, by the Factory Manager. When all the parts are finished and assembled, the gun is again viewed, tested, and shot at the Grounds. After a final viewing at the Factory, the gun is sent over to South Audley Street, where it is examined by the Managing Director before being passed for delivery to the customer.

Finishing the stock of a Purdey Gun.

Stocking and Finishing Shops

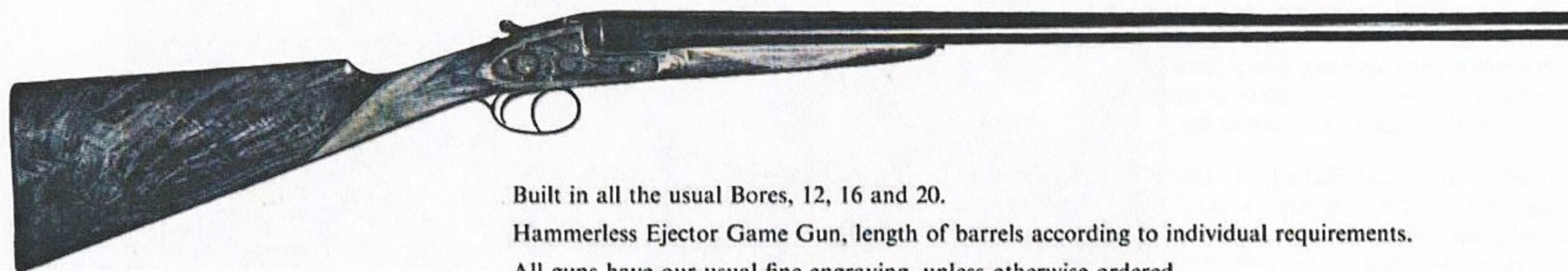


Action and Barrel Shops



*Photographs taken
at our works at
Irongate Wharf, London*

PURDEY GAME GUN



Built in all the usual Bores, 12, 16 and 20.

Hammerless Ejector Game Gun, length of barrels according to individual requirements.

All guns have our usual fine engraving, unless otherwise ordered.

Length of Barrels	Weight of Gun	Max. Length of Cartridge	
26 inches <i>55 cm</i>	6 lb. <i>2.72 kg</i>	2½ inches <i>65 mm</i>	12 BORE
27 inches <i>68.5 cm</i>	6 lb. 2 oz. <i>2.78 kg</i>	2½ inches <i>65 mm</i>	
28 inches <i>71 cm</i>	6 lb. 4 oz. <i>2.84 kg</i>	2½ inches <i>65 mm</i>	
30 inches <i>76 cm</i>	6 lb. 6 oz. <i>2.90 kg</i>	2½ inches <i>65 mm</i>	
26 inches <i>66 cm</i>	5 lb. 13 oz. <i>2.63 kg</i>	2½ inches <i>65 mm</i>	16 BORE
27 inches <i>68.5 cm</i>	5 lb. 14 oz. <i>2.66 kg</i>	2½ inches <i>65 mm</i>	
28 inches <i>71 cm</i>	6 lb. <i>2.72 kg</i>	2½ inches <i>65 mm</i>	
26 inches <i>66 cm</i>	5 lb. 5 oz. <i>2.40 kg</i>	2½ inches <i>65 mm</i>	20 BORE
27 inches <i>68.5 cm</i>	5 lb. 6 oz. <i>2.43 kg</i>	2½ inches <i>65 mm</i>	
28 inches <i>71 cm</i>	5 lb. 8 oz. <i>2.49 kg</i>	2½ inches <i>65 mm</i>	

JAMES PURDEY & SONS announce details of the 12, 16 and 20 gauge Guns that the Firm have specially designed and built for shooting in Europe and America.

We consider that one of these guns should be capable of meeting your shooting requirements.

It must be strong, as light as possible for comfort, and have perfect Purdey balance; the barrel length must be short for Brush shooting, yet giving the effect, when shooting, of a longer barrelled gun, by reason of the specially designed Purdey rib.

These guns are built to shoot the 2 $\frac{1}{4}$ inch cartridge with the heaviest or the lightest 2 $\frac{1}{4}$ inch loads that Ammunition Loaders produce, and they bear the security that the name "Purdey" has meant to sportsmen all over the world for more than 150 years.

Should it be desired to have an extra pair of barrels, with different boring and length, these can be built at the same time as the gun, and will provide a gun for dual purposes.

SPECIFICATION CHART

Some suggested barrel lengths and minimum gun weights for various bores.

Length of Barrels	Weight of Gun	Max. Length of Shell
26 inches <i>66 cm</i>	6 lb. 9 oz. <i>2.97 kg</i>	2 $\frac{1}{4}$ inches <i>70 mm</i>
27 inches <i>68.5 cm</i>	6 lb. 10 oz. <i>3.00 kg</i>	2 $\frac{1}{4}$ inches <i>70 mm</i>
28 inches <i>71 cm</i>	6 lb. 12 oz. <i>3.06 kg</i>	2 $\frac{1}{4}$ inches <i>70 mm</i>
<hr/>		
26 inches <i>66 cm</i>	5 lb. 15 oz. <i>2.69 kg</i>	2 $\frac{1}{4}$ inches <i>70 mm</i>
27 inches <i>68.5 cm</i>	6 lb. <i>2.72 kg</i>	2 $\frac{1}{4}$ inches <i>70 mm</i>
28 inches <i>71 cm</i>	6 lb. 1 oz. <i>2.75 kg</i>	2 $\frac{1}{4}$ inches <i>70 mm</i>
<hr/>		
26 inches <i>66 cm</i>	5 lb. 9 oz. <i>2.52 kg</i>	2 $\frac{1}{4}$ inches <i>70 mm</i>
27 inches <i>68.5 cm</i>	5 lb. 10 oz. <i>2.55 kg</i>	2 $\frac{1}{4}$ inches <i>70 mm</i>
28 inches <i>71 cm</i>	5 lb. 11 oz. <i>2.58 kg</i>	2 $\frac{1}{4}$ inches <i>70 mm</i>



PURDEY "OVER AND UNDER" GUN



There is no doubt that there is a great demand in the United States of America and in Europe to-day for the Over and Under Gun. The popularity of Clay Bird shooting in all its forms has been responsible for the increase in demand and popularity of this type of weapon, and to possess a gun which is suitable in every way for Game Shooting, Live Pigeon, and Clay (inanimate) Bird Shooting must be an added advantage to shooters all over the world. A Purdey Over and Under gun with two sets of barrels, one for Game and one for Clay Bird shooting, should be the ideal for every sportsman to attain.

Our personal experience of the requirements of Shooters in all parts of the United States, which we have visited each year since 1949, to satisfy ourselves on these matters, and also our European knowledge of shooting, will ensure the greatest care and practical knowledge in the building of these guns for the exact conditions under which they will be used.

SPECIFICATION CHART

OF SOME SUGGESTED BARREL LENGTHS AND MINIMUM GUN WEIGHTS FOR VARIOUS BORES.

Length of Barrels	Weight of Gun	Max. Length of Shell
26 inches <i>66 cm</i>	7 lb. 4 oz. <i>3.28 kg</i>	2½ inches <i>70 mm</i>
28 inches <i>71 cm</i>	7 lb. 6 oz. <i>3.34 kg</i>	2½ inches <i>70 mm</i>
30 inches <i>76 cm</i>	7 lb. 8 oz. <i>3.40 kg</i>	2½ inches <i>70 mm</i>
<hr/>		
26 inches <i>66 cm</i>	6 lb. 2 oz. <i>2.78 kg</i>	2½ inches <i>70 mm</i>
27 inches <i>68.5 cm</i>	6 lb. 4 oz. <i>2.83 kg</i>	2½ inches <i>70 mm</i>
28 inches <i>71 cm</i>	6 lb. 6 oz. <i>2.89 kg</i>	2½ inches <i>70 mm</i>
<hr/>		
26 inches <i>66 cm</i>	6 lb. 0 oz. <i>2.72 kg</i>	2½ inches <i>70 mm</i>
27 inches <i>68.5 cm</i>	6 lb. 2 oz. <i>2.78 kg</i>	2½ inches <i>70 mm</i>
28 inches <i>71 cm</i>	6 lb. 4 oz. <i>2.83 kg</i>	2½ inches <i>70 mm</i>

12

BORE

16

BORE

20

BORE

RIBS

The top rib of a gun is often the particular choice of the shooter, so any shape or style of rib can be fitted to these guns; (1) Elevated and Ventilated, (2) Plain Elevated, (3) Swept Out, (4) the new "PURDEY" rib, which has proved so suitable for the shorter barreled gun, giving it the perspective of the longer barrel. All types can be ordered, Plain or Matted, with any form of Bead Sights.

FORENDS

These must be built to personal requirements in any type of gun. The Beaver Tail Forend is much liked, but can be built to any individual requirement.

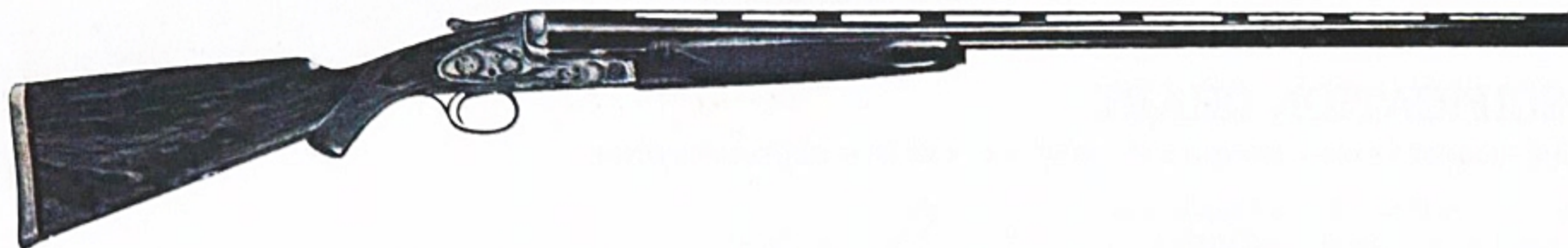
SINGLE TRIGGER

The "PURDEY" Single Trigger can be fitted to a Purdey gun in accordance with personal requirements.

Particulars of Over and Under Guns chambered for 2½ inch *65 m.m.* cartridges can be supplied on request.

PURDEY TRAP GUN

SINGLE BARREL



12 BORE

Hammerless Ejector Trap Gun for Clay Pigeon Shooting. Specially designed, after personal observation at the traps, to meet the exacting requirements of American Clay Bird Shooting. It has had a great success all over the world.

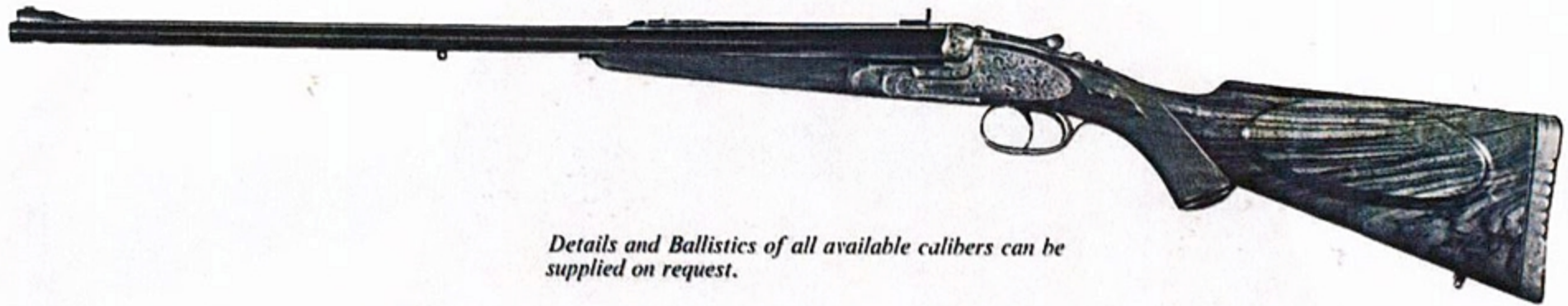
Length of barrel, weight, etc., to meet individual requirements.

James Purdey & Sons also build a double trap gun, for those desiring to use the same gun for single or double rises.



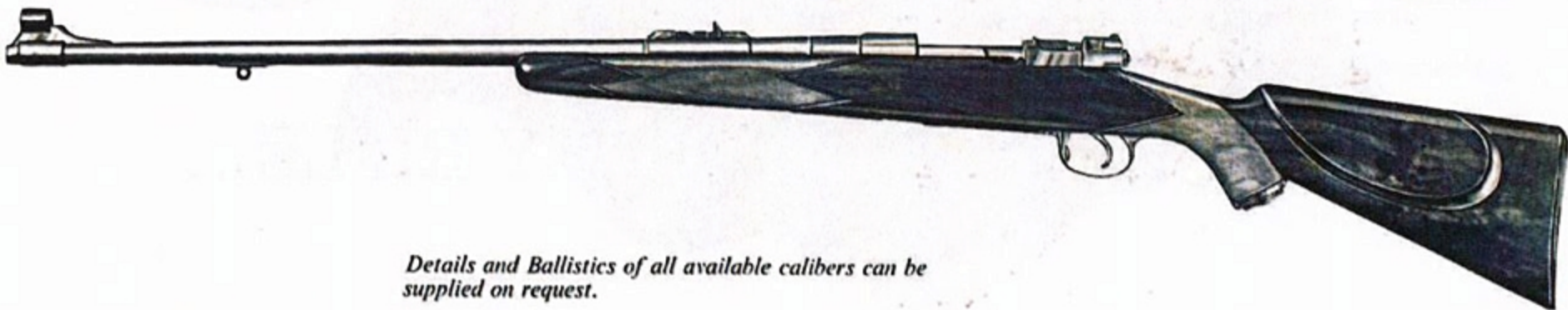
INTRODUCING THE PURDEY RIFLE...

PURDEY DOUBLE RIFLES



Details and Ballistics of all available calibers can be supplied on request.

PURDEY SINGLE RIFLES



Details and Ballistics of all available calibers can be supplied on request.

PURDEY RIFLES

Purdey Rifles can be built to customer's own specification and to such calibres for which ammunition and barrel forgings are available.



PURDEY CARTRIDGES

JAMES PURDEY AND SONS LIMITED

*have pleasure in offering the Purdey cartridge manufactured and loaded to their specifications
by Messrs. Imperial Metal Industries (Kynoch) Limited
A Subsidiary Company of Imperial Chemical Industries Limited*

THE BEST CARTRIDGES AT THE LOWEST PRICES

12 BORE "SHORT BRASS"

2½ INCH CARTRIDGES WITH THE CRIMPED CLOSURE

16 AND 20 BORE "SHORT BRASS"

2½ INCH CARTRIDGES WITH CRIMPED CLOSURE

These are the standard Game cartridges specially loaded to give the best pattern and penetration

James Purdey & Sons Ltd. also supply all the standard Eley Brands, including the following "Maximum" and "Alphamax" cartridges

12 & 16 BORE "MAXIMUM" CARTRIDGES WITH THE CRIMPED CLOSURE

These 12 bore cartridges are loaded with 1 ³/₁₆ oz. of shot for use in 2½ inch chambered guns

*The 16 bore cartridges are loaded with 1 ¹/₈ oz. of shot for use in 2½ inch chambered guns,
but use in lightweight guns is not recommended in either case*

12 BORE "ALPHAMAX"

2½ INCH CARTRIDGES WITH THE CRIMPED CLOSURE

16 & 20 BORE "ALPHAMAX"

2½ INCH CARTRIDGES WITH THE CRIMPED CLOSURE

These cartridges are specially loaded for long range shooting

CARTRIDGE PRICE LIST WILL BE SENT ON APPLICATION

GUN CASES

Gun Covers, Cartridge Bags, Cartridge Magazines,
Shooting Seats, Shooting Coats and all other
shooting accessories. Prices on application.

FLAT OAK AND LEATHER CASES

FLAT V.C. CASES

MOTOR CASES

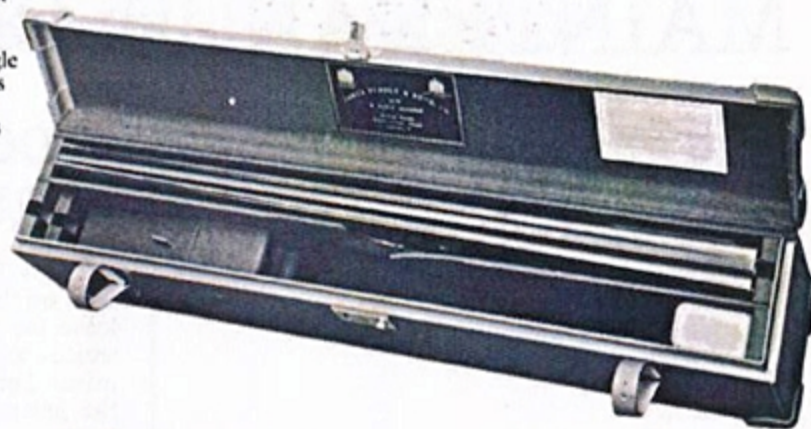


These best oak and leather cases can be supplied for a pair of guns, a single gun or a gun with an extra pair of barrels. Complete with fittings. Canvas overcases can be supplied. Prices on application.

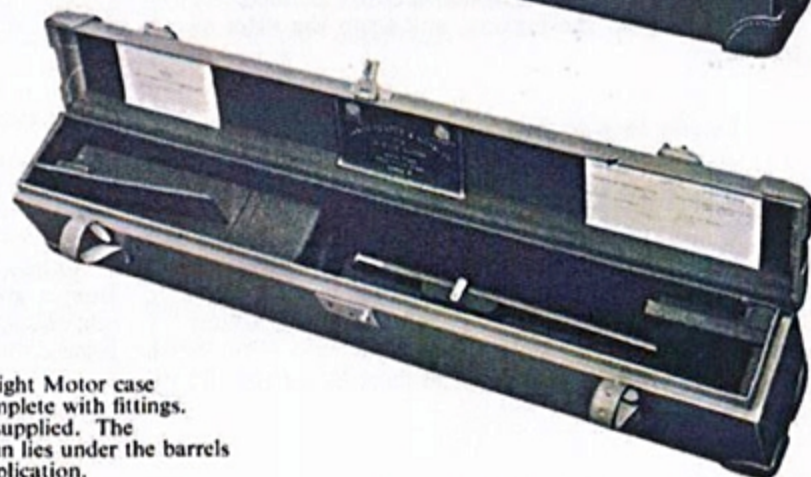


A very compact lightweight leather or canvas case for a pair of guns, or a single gun. Complete with fittings. Prices on application.

A leather or canvas lightweight Motor case to hold a pair of guns. Complete with fittings. Can be supplied to take a single gun and extra barrels. Canvas overcases can be fitted. The stocks and actions of the guns lie under the barrels in these cases. Prices on application.



Motor case when closed.



Leather or canvas lightweight Motor case to hold a single gun. Complete with fittings. Canvas overcases can be supplied. The stock and action of the gun lies under the barrels in this case. Prices on application.

MAINTENANCE OF THE PURDEY GUN

Every year a Purdey gun should be stripped down and thoroughly overhauled by Purdey craftsmen. The same men who build the new gun, carry out the maintenance of the old guns.

If it is not possible to send your gun to Purdeys each year we include instructions for the maintenance of our guns, below:

BARRELS

Immediately after use the barrels must be wiped through with dry tow to remove any residue from cartridges. The tow should then be changed and the new clean tow smeared with gun oil, and the internal bore of the barrel well oiled. The bore should be left well oiled after cleaning. The outside of the barrels should be wiped over with an oily cloth. Care should be taken to see that all moisture is removed from the luggers, and from the sides of the ribs.

ACTIONS

Actions should be wiped over, and all traces of moisture and dirt removed from the slots. A thin layer of oil should be left on all parts of the action and on the triggers.

STOCKS AND FOREPARTS

ON NO ACCOUNT should any gun oils be used on the stocks or forend woods. When the guns leave the Factory, all the wood parts are specially treated with a preparation of oils and waxes, so any mineral oil used on the stocks or forends will destroy the protective preparation with which the wood is treated. Should the stocks or foreparts be wet and become dull, wipe them dry with a clean cloth. A smear of linseed oil on the fingertip should then be rubbed over each stock. This should be left overnight, and next morning the stock should be rubbed briskly with the palm of the hand until a good polish appears.

No other work on the stocks or foreparts is necessary or desirable.

EJECTORS

A very thin oil should be used to wipe the cams of the ejectors.

IMPORTANT

Only in an emergency should locks be removed from a gun. In all other cases of a breakdown, the gun should be sent to a gunmaker for the necessary repairs.

SHOT GUN CERTIFICATES

Customers are reminded that although we can take in guns for storage, the law does not permit us to carry out any work or return guns until details of the customer's shot-gun certificate has been recorded in our police register.

NOTES ON THE PROOF OF GUN BARRELS

The proof of gun barrels was instituted to protect the public against the many unsound arms then being made and sold, which not only endangered the public, but also indirectly brought discredit upon reputable Gunmakers.

Proof marks were first established by the London Gunmakers' Company in 1637, the date of incorporation, but it was not until 1670, when it secured its Ordinances, that it was enabled to enforce proof.

The Birmingham Proof House was established by Act of Parliament in 1813, but prior to that date private proof houses were being operated by the gunmakers Galton and Ketland, and it is interesting to note that the mark by Ketland eventually developed into the Proof Mark of the officially established Birmingham Proof House.

Proof is now administered in accordance with the Gun Barrel Proof Acts, 1868 and 1950.

There are two main classes of proof of shot guns, Provisional and Definitive; the first is applied to the tubes in an unfinished condition. For definitive proof the gun is submitted either finished or in the "White" condition.

No new fire-arm may be sold, or even offered for sale, unless it has been fully proved and duly marked. The same applies to second-hand fire-arms; and even though bearing Proof Marks, if the barrels of shot guns have been bored out so that thereafter the bore no longer agrees with the gauge mark impressed on the flats of the barrels at Proof, the sale of such an arm is an offence.



BY APPOINTMENT TO
HER MAJESTY QUEEN ELIZABETH II
CARTRIDGE MAKERS



BY APPOINTMENT TO
H. R. H. THE DUKE OF EDINBURGH
GUN MAKERS

JAMES PURDEY & SONS LTD

GUN, RIFLE AND CARTRIDGE MAKERS

AUDLEY HOUSE - 57 & 58 SOUTH AUDLEY STREET - LONDON W1Y 6ED ENGLAND

TELEPHONE: 01-499 1801-2 - CABLES: PURDEY, AUDLEY, LONDON